

Gear Series **GBW**

Spur Reduction Gearhead - 15 Nm



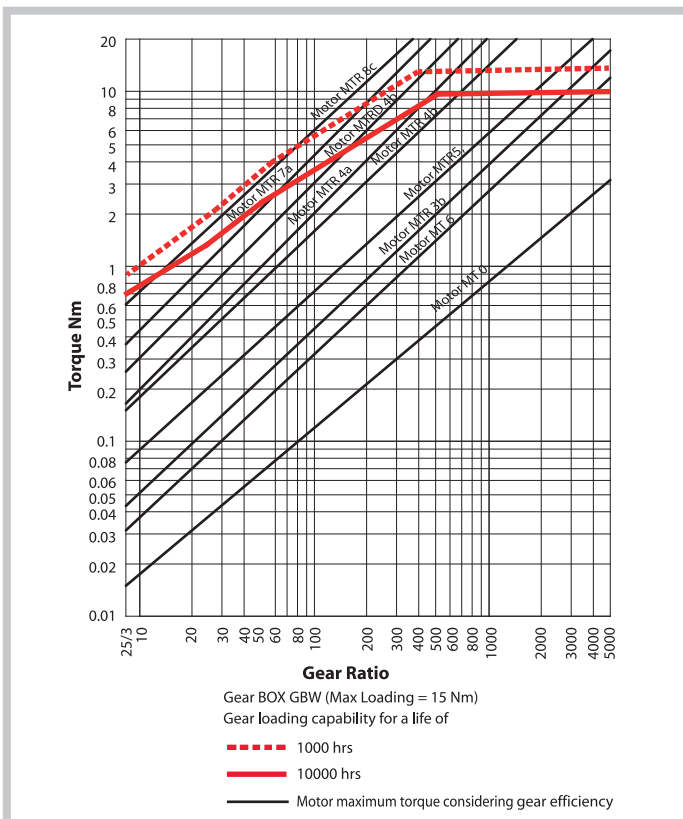
Design

Gearhead GBW contains heavily loaded steel gear wheels. The spur gears are fixed on steel spindles which are hardened and polished to a mirror finish & rotate in sintered bushings. The thick output shaft rotates in robust sintered bushings. All the gears are housed in between metal plates & closed by plastic dust cover. All bearings are permanently lubricated and therefore require no maintenance. GBW can also be combined with small to medium sizes of DC motors (up to $\varnothing 52\text{mm}$). Output shaft can also be emerging from the rear side or both sides.

Standard Data

Gear Type		Spur
Gear Torque	Nm	15
Combination with Mechtex motors		MT0,MT6,MTR/S5,MTR/S-4a/b,MTR/SD-4a/b, MTR/S-7a,MTR/S-8c and DC motors / (upto 52 mm)
Mounting		any position
Weight	g	550
Axial thrust	N	400
Lateral force	N	600
Radial torque	Nm	6
Output bearing		Sintered Bronze sleeve bushings, (Ball bearing on request)
Output shafts	\varnothing	dia. 12 x 25.5 mm (with a flat), others on request
Ambient temperature operation	$^{\circ}\text{C}$	-15...+ 55
Enclosure	IP	30

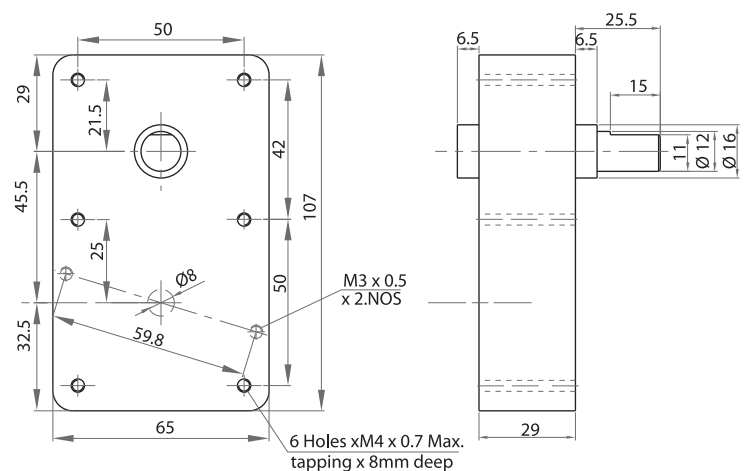
Torque/Transmission Ratio/Life Graph



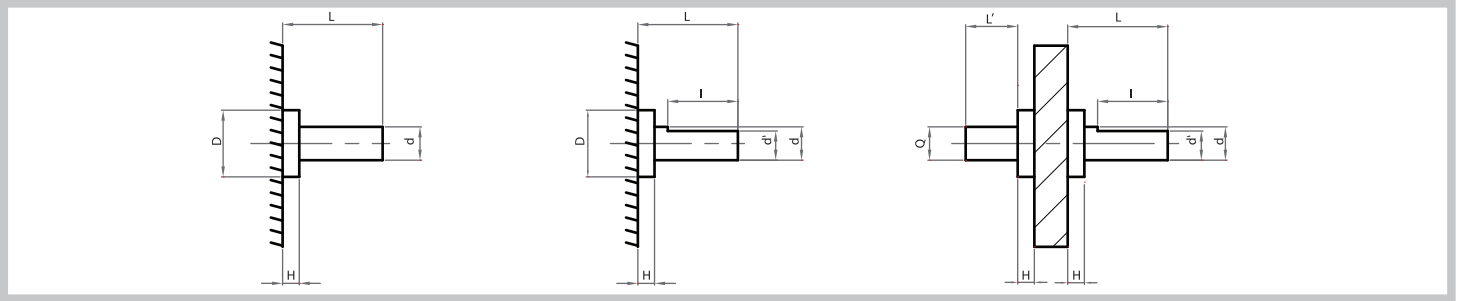
Transmission Ratios

For Transmission Ratios refer to page no. 6

Dimensional Drawing



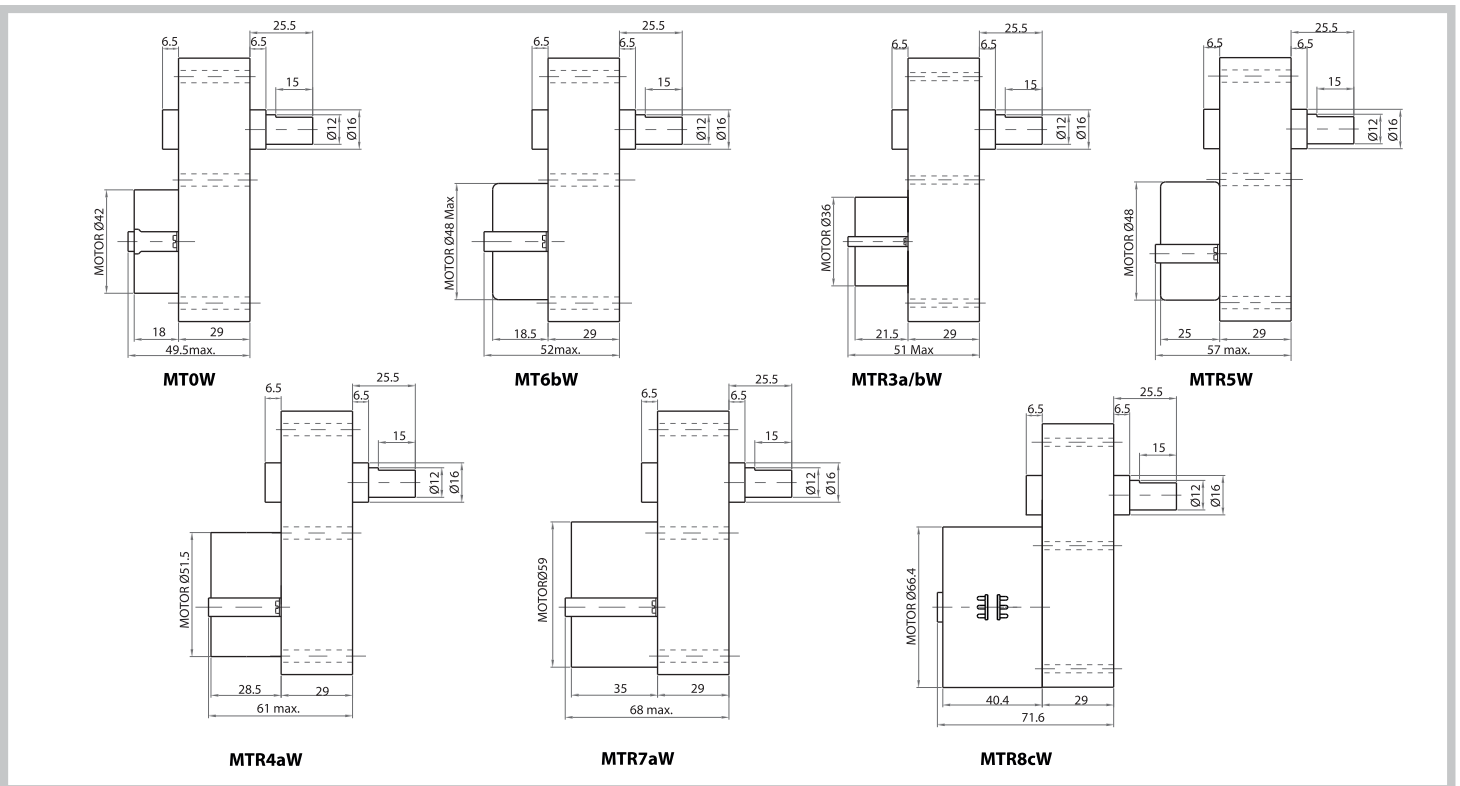
Shaft Drawings



Shaft Type Catalogue

Shaft type	D (+0.00/-0.10)	H	d (dia)	L	l	d'	L'	Q
OS	16	6.5	12	25.5	15	11		
OA	16	6.5	12	35.5	25	11		
OB	16	6.5	12	25.5	15	11	17	12
OC	16	6.5	12	25.5				
OD	16	6.5	12	35.5				

Assembly Drawings



Photographs

