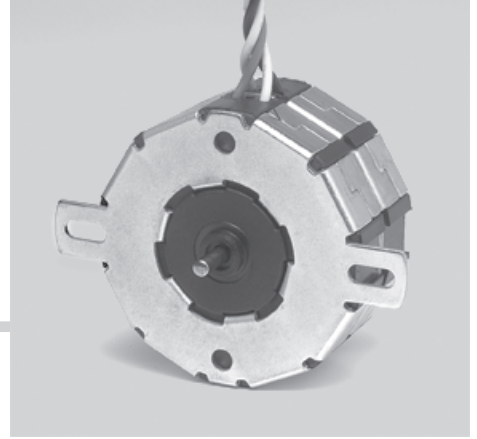


Motor Series **MTS4b**

Stepper Motor 15°



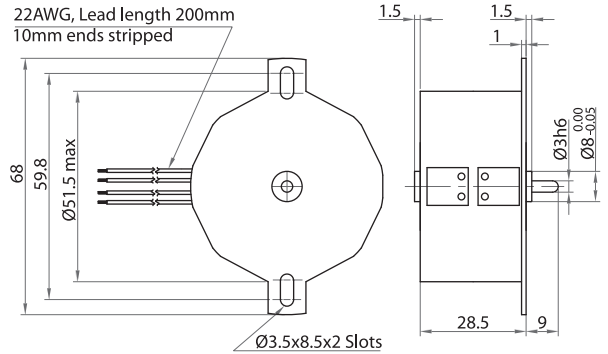
Standard Data

Motor type		Permanent Magnet (PM) stepper motor
Electrical Enclosure	IP	40
Connections		Flexible Leads 22 AWG, 200mm length; ends stripped 10 mm
Life expectancy		3 years in continuous operation
Weight	g	200
Mounting		Any position by ears or screw clip

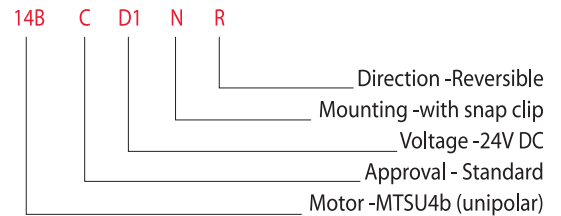
Technical Data

Steps per revolution		24		
Degree/step		15		
Winding Type		bipolar		
Standard Voltage	V	6	12	24
Resistance per winding	Ω	9.5	61	251
Winding Type		unipolar		
Standard Voltage	V	6	12	24
Resistance per winding	Ω	15	61	251
Winding temperature	$^{\circ}\text{C}$	105 max.		
Holding torque	Ncm	5.2	(MTSB4b)	4 (MTSU4b)
Axial Force	N	3		
Lateral Force	N	6		
Rotor inertia	gcm ²	13		

Dimensional Drawing

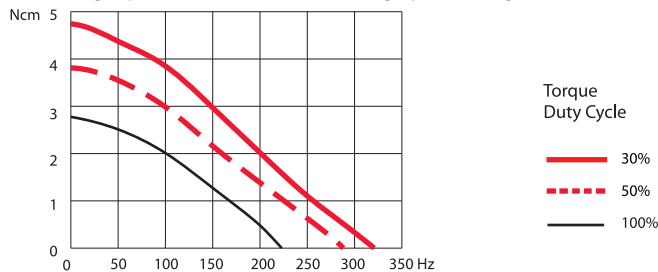


Ordering Data (eg.)

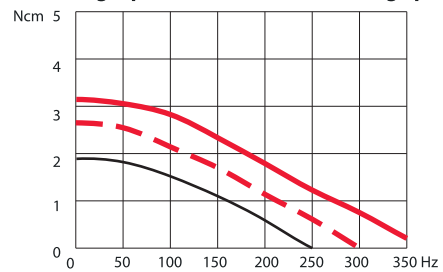


Torque Graphs

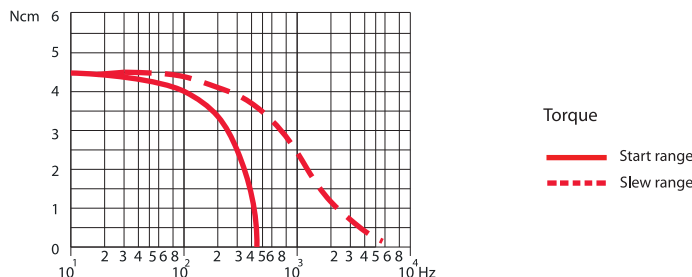
Start range (pull-in) with constant voltage power stage



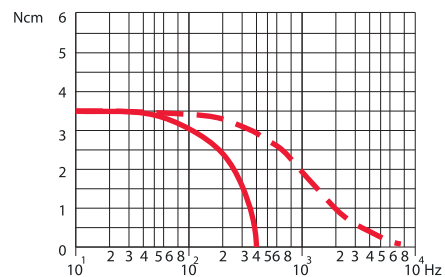
Start range (pull-in) with constant voltage power stage



2-Phase stepper Motor MTSB4b



4-Phase Stepper Motor MTSU4b



Slew range (pull-out) and start range (pull-in) with constant current power stage (chopper Drive)

Slew range (pull-out) and start range (pull-in) with constant current power stage (chopper Drive)