

# Gear Series **GB3/8**

## Spur Reduction Gearhead - 4 Nm



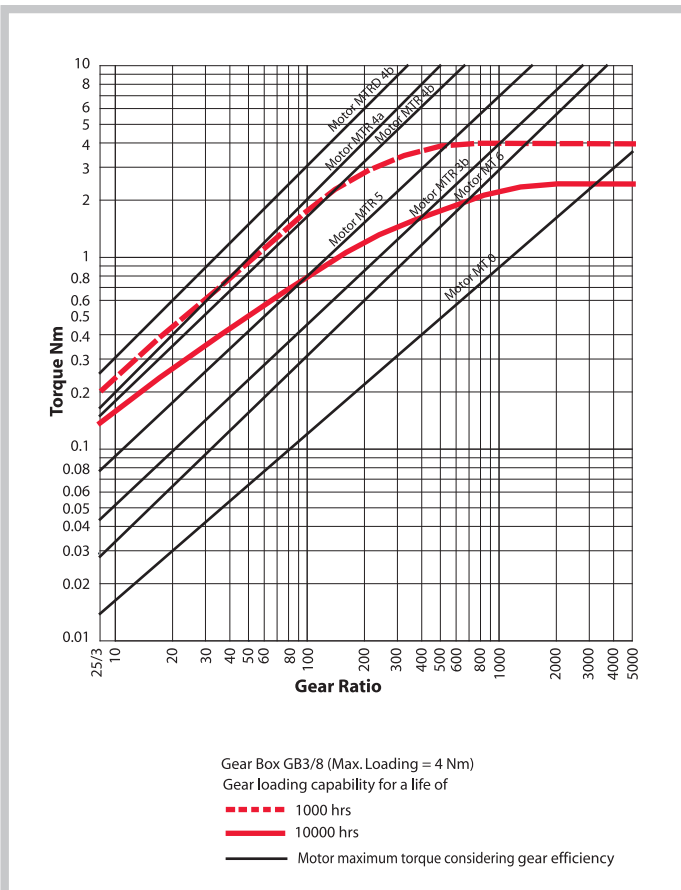
### Design

Gearhead GB3/8 contains heavily loaded steel gear wheels. The spur gears rotate on fixed steel spindles which are hardened and polished to a mirror finish. The thick output shaft rotates in robust sintered bushings. All the gears are housed between two metal plates with a plastic frame. All bearings are permanently lubricated and therefore require no maintenance. Economical versions with poly-acetal or sintered gears available. This gear box can also be combined with small to medium sizes of DC motors.

### Technical Data

|                                 |    |   |
|---------------------------------|----|---|
| Gear Type                       |    | Spur  |
| Gear Torque                     | Nm | 4   |
| Combination with Mechtex motors |    | Motor MT0, MT6, MTR/S3a/3b, MTR/S-5, MTR/S4a/4b and small DC motors |
| Mounting                        |    | any position  |
| Weight                          | g  | 200   |
| Axial thrust                    | N  | 100   |
| Lateral force                   | N  | 250   |
| Radial torque                   | Nm | 3   |
| Slipping clutches/free wheel    |    | available for certain ratios  |
| Output bearing                  |    | Sintered bronze sleeve bushings, ( Ball bearing on request)         |
| Output shafts                   | Ø  | dia. 8 x 23 mm (with a flat), others on request                     |
| Ambient temperature operation   | °C | -15...+ 55  |
| Enclosure                       | IP | 30  |

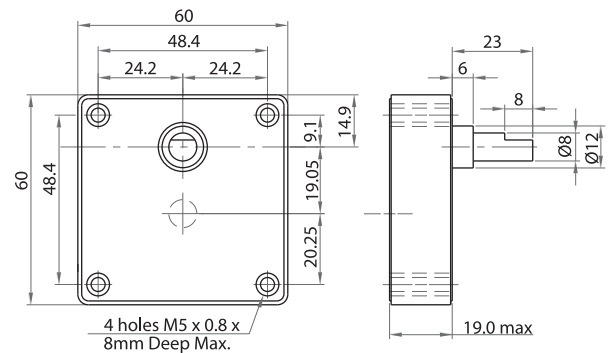
### Torque/Transmission Ratio/Life Graph



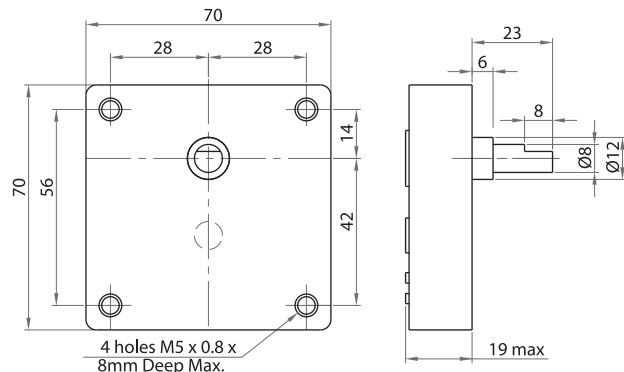
### Transmission Ratios

For Transmission Ratios refer to page no.6

### Dimensional Drawing GB3



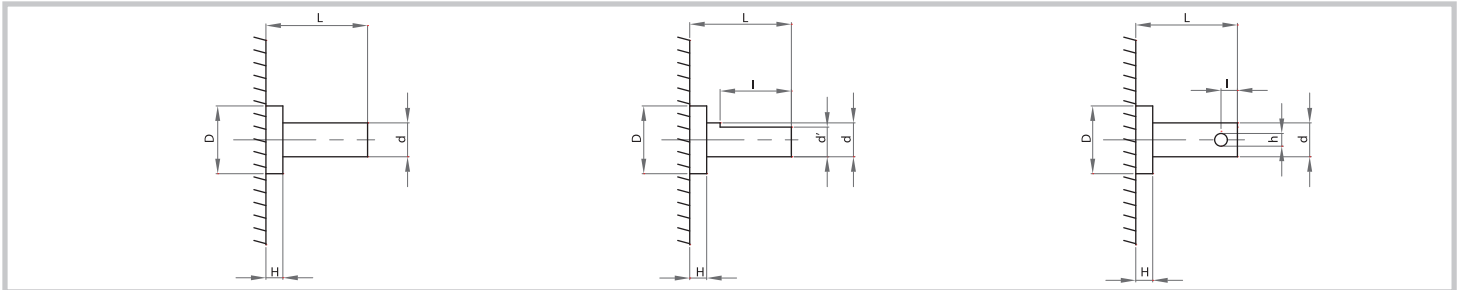
### Dimensional Drawing GB8



# Gear Series **GB3/8**

Spur Reduction Gearhead - 4 Nm

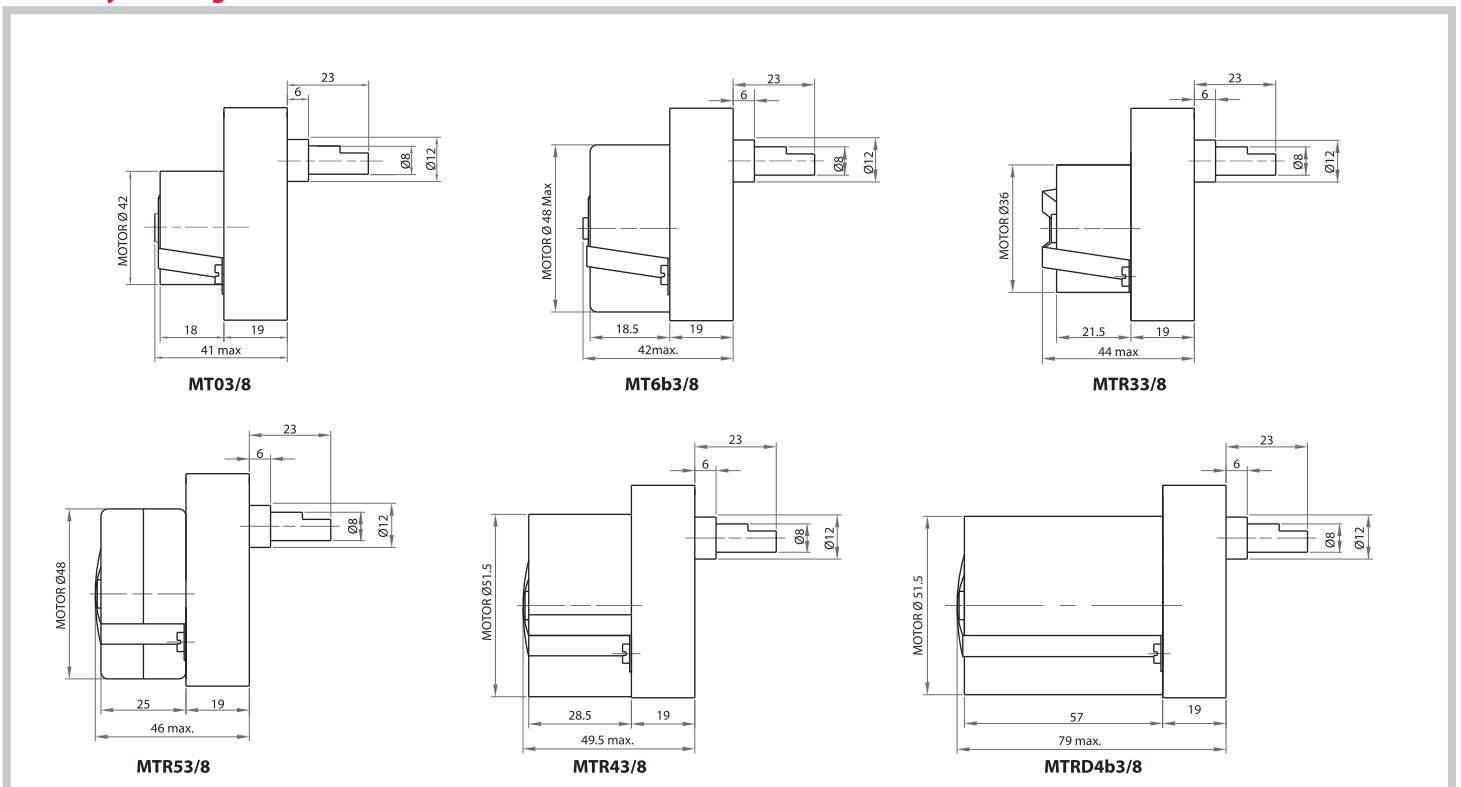
## Shaft Drawings



## Shaft Type Catalogue

| Shaft type | D (+0.00/ -0.10) | H | d (dia) | L  | l  | d' | h |
|------------|------------------|---|---------|----|----|----|---|
| OS         | 12               | 6 | 8       | 23 | 8  | 6  |   |
| OA         | 12               | 6 | 8       | 33 | 18 | 6  |   |
| OC         | 12               | 6 | 8       | 23 | 9  |    | 3 |

## Assembly Drawings



## Photographs

